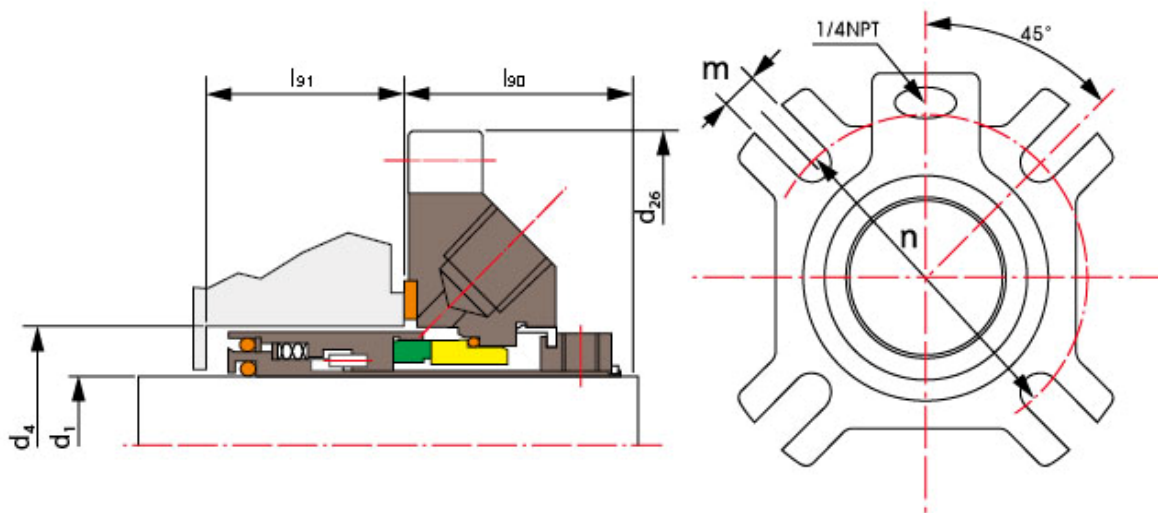
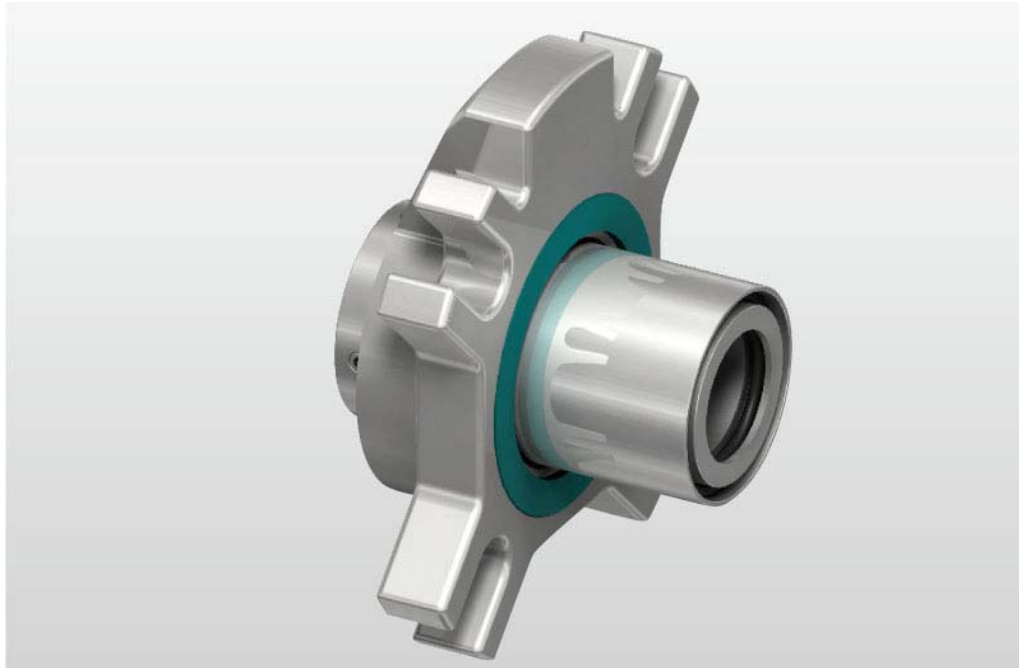


Sellos Mecánicos de Cartucho TSSC-J05 24mm-70mm



Anillo Rotatorio (SiC/Carbón /TC)
Anilla Estacionaria (SiC/TC)
Sello Secundario (VITON/Anillo Encapsulado/PTFE)
Otras Piezas (SUS304/SUS316/Titanio/Hastelloy-C)

Shanghai Trisun Parts Manufacture Co.,Ltd.

Oficina central en Shanghai:

Oficina 05-06, Piso 16th, Edificio Hongjia, Calle Fushan No.388 (Cerca de la Calle Xiangcheng), Pudong, Shanghai, China.

Código Postal: 200122

Tel.: +86-21-58355541,+86-21-58353145,+86-21-58353343

Fax: +86-21-58353141

Correo Electrónico: trisun24@trisunltd.com

Límites de Funcionamiento

Presión: ≤ 2.1 MPa

Velocidad: ≤ 18 m/s

Temperatura: $+250^{\circ}\text{C}$

d ₁ (mm)	d ₄		d ₂₆	l ₉₀	l ₉₁	n		m
	Mín.	Máx.				Mín.	Máx.	
24	40.0	49.2	104.8	36.0	32	66.7	95.5	11.1
25	41.0	49.2	104.8	36.0	32	66.7	95.3	11.1
28	44.0	52.4	108.0	36.0	32	69.9	98.4	11.1
30	46.0	55.6	111.0	36.0	32	73.0	101.6	11.1
32	47.6	55.6	111.0	36.0	32	73.0	101.6	11.1
33	49.0	58.7	114.3	36.0	32	73.0	101.6	11.1
35	50.8	58.7	114.3	36.0	32	77.8	104.8	11.1
38	57.2	63.5	127.0	37.0	33	87.3	114.3	14.3
40	60.0	63.5	127.0	37.0	33	87.3	114.3	14.3
43	63.0	66.7	133.4	37.0	33	90.5	120.7	14.3
45	63.5	66.7	133.4	37.0	33	90.5	120.7	14.3
48	66.7	76.2	139.7	37.0	33	98.4	127.0	14.3
50	69.8	76.2	139.7	37.0	33	98.4	127.0	14.3
53	73.0	84.1	146.0	37.0	33	111.1	130.2	17.5
55	73.0	84.1	146.0	37.0	33	111.1	130.2	17.5
58	79.4	90.5	152.4	37.0	33	117.5	136.5	17.5
60	79.4	90.5	152.4	37.0	33	117.5	136.5	17.5
63	82.6	98.4	158.8	37.0	36	123.8	142.9	17.5
65	88.9	98.4	158.8	37.5	36	123.8	142.9	17.5
70	95.0	98.4	158.8	37.5	36	123.8	142.9	17.5

Shanghai Trisun Parts Manufacture Co.,Ltd.

Oficina central en Shanghai:

Oficina 05-06, Piso 16th, Edificio Hongjia, Calle Fushan No.388 (Cerca de la Calle Xiangcheng), Pudong, Shanghai, China.

Código Postal: 200122

Tel.: +86-21-58355541,+86-21-58353145,+86-21-58353343

Fax: +86-21-58353141

Correo Electrónico: trisun24@trisunltd.com