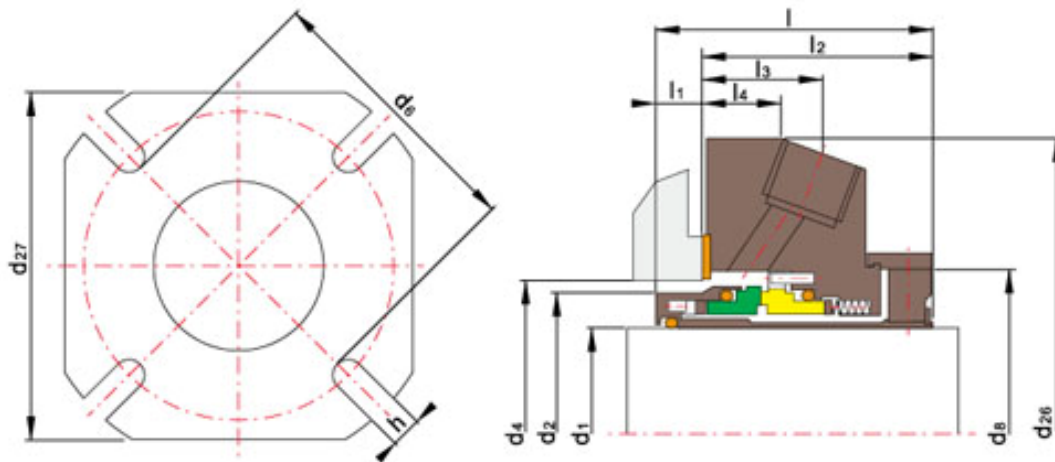
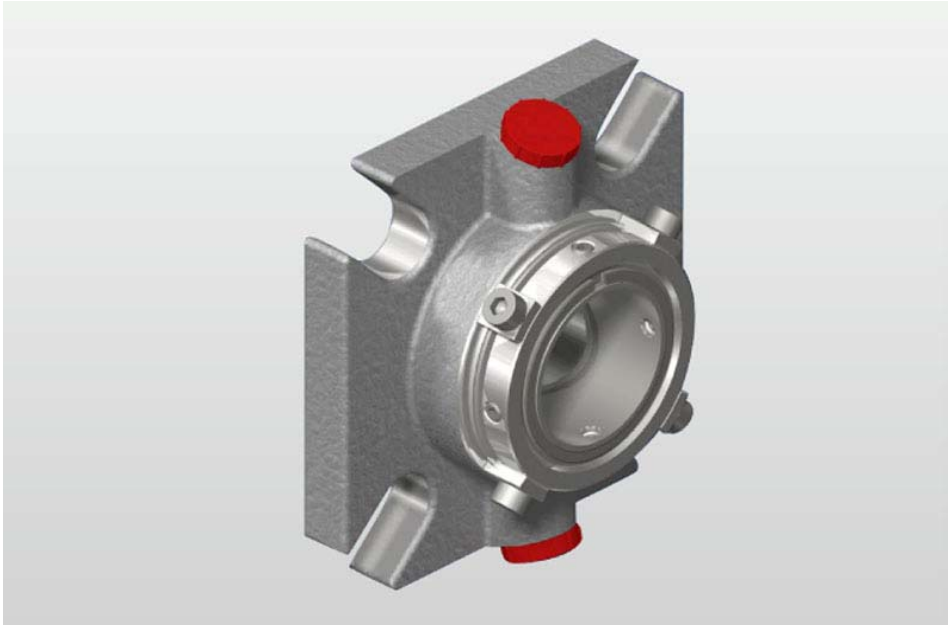


Sellos Mecánicos de Cartucho TSSC-A05 24mm-70mm



Características:

Límites de Funcionamiento:

Presión: $\leq 2.3\text{MPa}$

Velocidad: $\leq 23\text{m/s}$

Temperatura: $-30^{\circ}\text{C} \sim 200^{\circ}\text{C}$

1. Anillo Rotatorio (Carbón/SiC/TC)
2. Anilla Estacionaria (SiC/TC)

Shanghai Trisun Parts Manufacture Co.,Ltd.

Oficina central en Shanghai:

Oficina 05-06, Piso 16th, Edificio Hongjia, Calle Fushan No.388 (Cerca de la Calle Xiangcheng), Pudong, Shanghai, China.

Código Postal: 200122

Telf.: +86-21-58355541,+86-21-58353145,+86-21-58353343

Fax: +86-21-58353141

Correo Electrónico: trisun24@trisunltd.com

3. Sello Secundario (VITON/EPDM/Kalrez)

4. Otras Piezas (C-276/Dúplex/316)

Tamaño del Sello (pulgadas)	d ₁	d ₂	d ₄		d ₆	d ₈	d ₂₆	d ₂₇	l	l ₁	l ₂	l ₃	l ₄	h
			Mín.	Máx.										
24	24	38.0	40.0	48.0	61.0	51.0	105.0	99.0	55.7	10	45.7	20.5	11.9	14.0
25	25	39.0	41.0	51.0	61.0	51.0	105.0	101.6	55.7	10	45.7	20.5	11.9	14.0
28	28	42.6	44.0	54.0	65.0	55.5	111.0	99.0	55.7	10	45.7	20.3	11.9	14.0
30	30	44.1	46.0	54.0	64.6	56.4	105.0	97.8	55.7	10	45.7	20.3	11.9	14.0
32	32	47.1	49.0	57.0	66.5	59.5	105.0	99.0	55.7	10	45.7	21.2	14.0	14.0
33	33	47.1	49.0	57.0	66.5	59.5	105.0	99.0	55.7	10	45.7	21.2	14.0	14.0
35	35	49.0	51.0	59.0	68.5	61.5	111.0	104.1	55.7	10	45.7	21.5	13.2	14.0
38	38	52.9	57.0	70.0	80.7	70.7	135.0	114.3	57.6	10	47.6	24.6	16.0	14.0
40	40	54.8	59.0	70.5	80.7	70.7	135.0	114.3	57.6	10	47.6	24.6	16.0	14.0
43	43	56.1	61.0	70.5	80.7	70.7	135.0	114.3	7.0	10	47.6	20.5	15.5	14.0
45	45	59.3	64.0	75.0	83.7	75.7	139.0	117.5	57.6	10	47.6	24.3	16.0	14.0
48	48	62.4	66.6	75.0	83.7	75.7	139.0	117.5	57.6	10	47.6	24.3	16.0	14.0
50	50	65.3	70.0	78.0	87.6	79.0	150.0	124.5	57.6	10	47.6	24.3	16.0	17.5
53	53	68.8	73.0	87.0	97.0	85.0	150.0	136.5	57.6	10	47.6	22.5	15.5	17.5
55	58	68.8	73.0	87.0	97.0	85.0	150.0	136.5	57.6	10	47.6	22.5	15.5	17.5
58	60	72.0	76.2	92.0	102.4	88.7	164.5	139.7	57.6	10	47.6	24.6	16.0	17.5
60	63	75.2	80.0	92.0	102.4	88.7	164.5	139.7	57.6	10	47.6	24.6	16.0	17.5
63	65	78.3	83.0	98.5	108.7	96.1	171.0	147.4	57.6	10	47.6	23.7	16.0	17.5
65	70	81.5	86.0	98.5	108.7	96.1	171.0	147.4	57.6	10	47.6	23.7	16.0	17.5
70	70	84.7	89.0	100.0	111.9	98.3	180.5	152.4	57.6	10	47.6	24.3	16.0	17.5

Shanghai Trisun Parts Manufacture Co.,Ltd.

Oficina central en Shanghai:

Oficina 05-06, Piso 16th, Edificio Hongjia, Calle Fushan No.388 (Cerca de la Calle Xiangcheng), Pudong, Shanghai, China.

Código Postal: 200122

Telf.: +86-21-58355541,+86-21-58353145,+86-21-58353343

Fax: +86-21-58353141

Correo Electrónico: trisun24@trisunltd.com