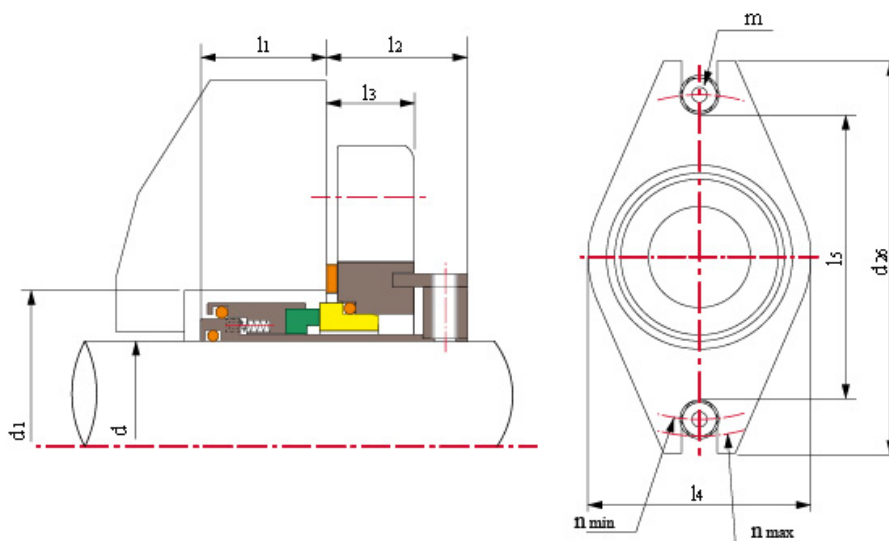
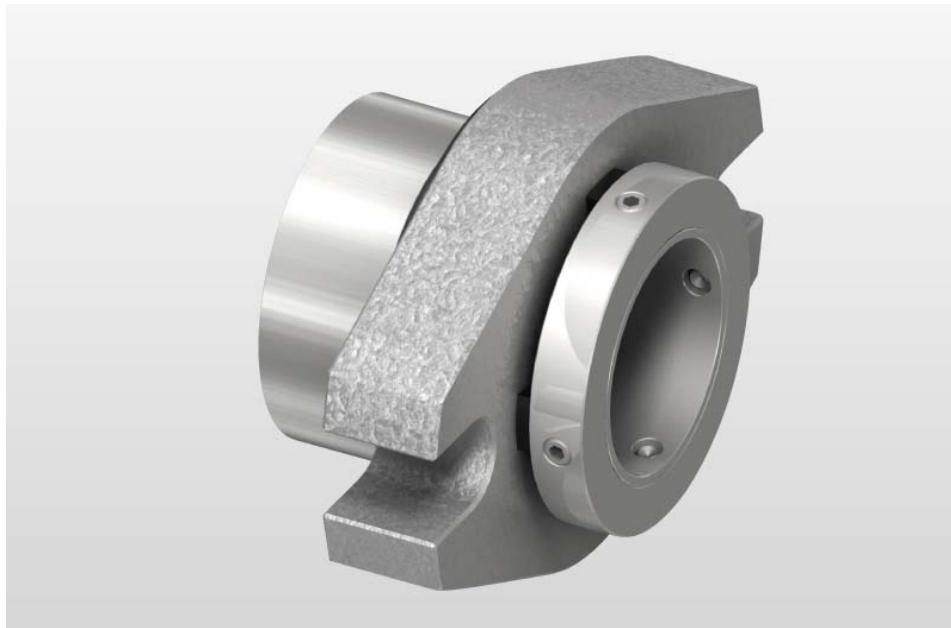


Sellos Mecánicos de Cartucho TSSC-A01 1.000-4.000 (pulgadas)



- Anillo Rotatorio (SiC/Carbón/TC)
- Anilla Estacionaria (SiC/TC)
- Sello Secundario (VITON/Anillo Encapsulado/PTFE)
- Otras Piezas (SUS304/SUS316/Titanio/Hastelloy-C)

Shanghai Trisun Parts Manufacture Co.,Ltd.

Oficina central en Shanghai:

Oficina 05-06, Piso 16th, Edificio Hongjia, Calle Fushan No.388 (Cerca de la Calle Xiangcheng), Pudong, Shanghai, China.

Código Postal: 200122

Tel.: +86-21-58355541,+86-21-58353145,+86-21-58353343

Fax: +86-21-58353141

Correo Electrónico: trisun24@trisunltd.com

d (mm)	d ₂₆	l ₅	l ₃	l ₄	d ₁		n		m	l ₁	l ₂
					Mín.	Máx.	Mín.	Máx.			
24	101.6	55.6	20.7	56.1	40.0	48.0	69.9	88.9	12	28.6	31.8
25	101.6	55.6	20.7	56.1	41.0	48.0	69.9	88.9	12	28.6	31.8
28	104.8	58.8	20.7	59.3	44.0	50.0	73.1	92.1	12	28.6	31.8
30	108.0	61.9	20.7	62.4	46.0	54.0	76.2	95.3	12	28.6	31.8
32	108.0	61.9	20.7	62.4	48.0	54.0	76.2	95.3	12	28.6	31.8
33	108.0	61.9	20.7	62.4	49.0	55.0	76.2	95.3	12	28.6	31.8
35	108.0	66.7	20.7	67.2	51.0	59.0	81.0	95.3	12	28.6	31.8
38	114.3	71.5	22.3	72.0	57.2	62.0	85.8	101.6	12	28.6	33.4
40	114.3	71.5	22.3	72.0	58.0	64.0	85.8	101.6	12	28.6	33.4
43	120.7	74.6	22.3	75.1	61.0	67.0	88.9	108.0	12	28.6	33.4
45	127.0	77.8	23.8	78.3	63.5	69.0	92.1	114.3	12	30.2	35.0
48	133.4	81.0	23.8	81.5	66.7	72.0	95.3	120.7	12	30.2	35.0
50	133.4	81.0	23.8	81.5	68.0	74.0	95.3	120.7	12	30.2	35.0
53	139.7	84.2	25.4	84.7	71.0	77.0	101.6	123.9	16	30.2	36.5
55	146.1	87.3	25.4	87.8	74.0	79.0	104.8	130.2	16	30.2	36.5
58	165.1	95.3	25.4	98.9	79.4	85.7	115.9	146.0	20	30.2	36.5
60	165.1	95.3	25.4	98.9	79.4	85.7	115.9	146.0	20	30.2	36.5
63	177.8	111.2	25.4	121.2	85.8	101.6	131.8	158.7	20	28.6	41.2
65	177.8	111.2	25.4	121.2	88.9	101.6	131.8	158.7	20	28.6	41.2
68	177.8	111.2	25.4	121.2	92.1	101.6	131.8	158.7	20	28.6	41.2
70	177.8	111.2	25.4	121.2	92.1	101.6	131.8	158.7	20	28.6	41.2
75	190.5	125.4	31.7	130.7	98.5	114.3	146.1	171.4	20	30.2	50.8
80	190.5	125.4	31.7	130.7	101.6	114.3	146.1	171.4	20	30.2	50.8
85	203.2	135.0	31.7	140.2	108.0	123.8	155.6	184.1	20	30.2	50.8
90	215.9	144.5	31.7	149.7	114.3	133.3	165.1	196.8	20	30.2	50.8
95	215.9	144.5	31.7	149.7	117.5	133.3	165.1	196.8	20	30.2	50.8
100	228.6	154.0	31.7	156.1	123.9	139.7	174.7	209.5	20	30.2	50.8

Shanghai Trisun Parts Manufacture Co.,Ltd.

Oficina central en Shanghai:

Oficina 05-06, Piso 16th, Edificio Hongjia, Calle Fushan No.388 (Cerca de la Calle Xiangcheng), Pudong, Shanghai, China.

Código Postal: 200122

Tel.: +86-21-58355541,+86-21-58353145,+86-21-58353343

Fax: +86-21-58353141

Correo Electrónico: trisun24@trisunltd.com