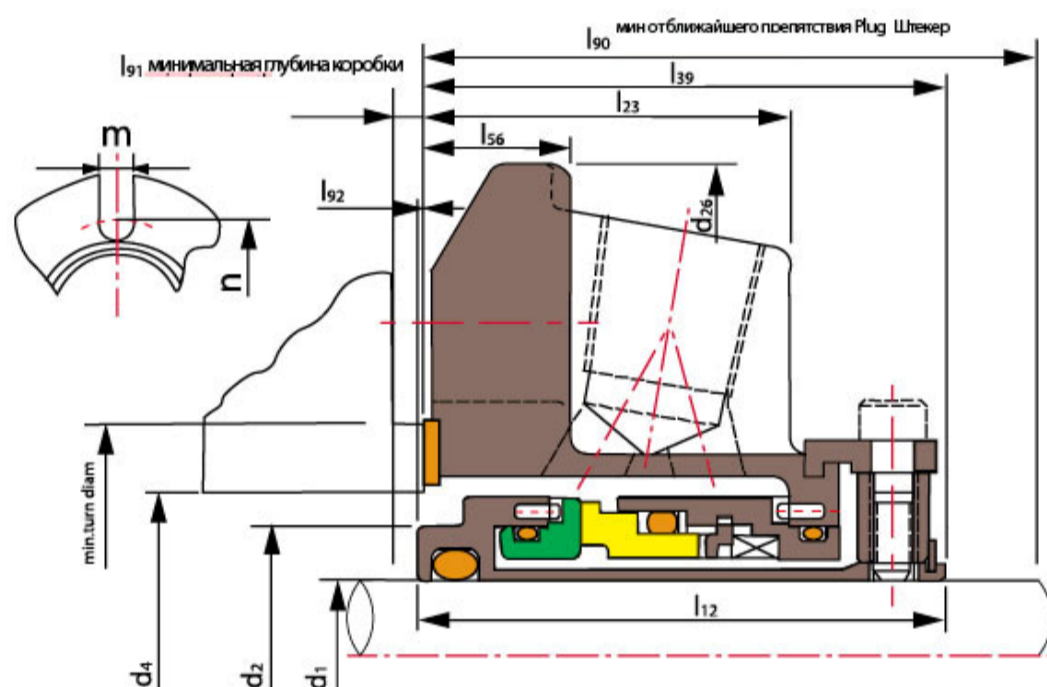
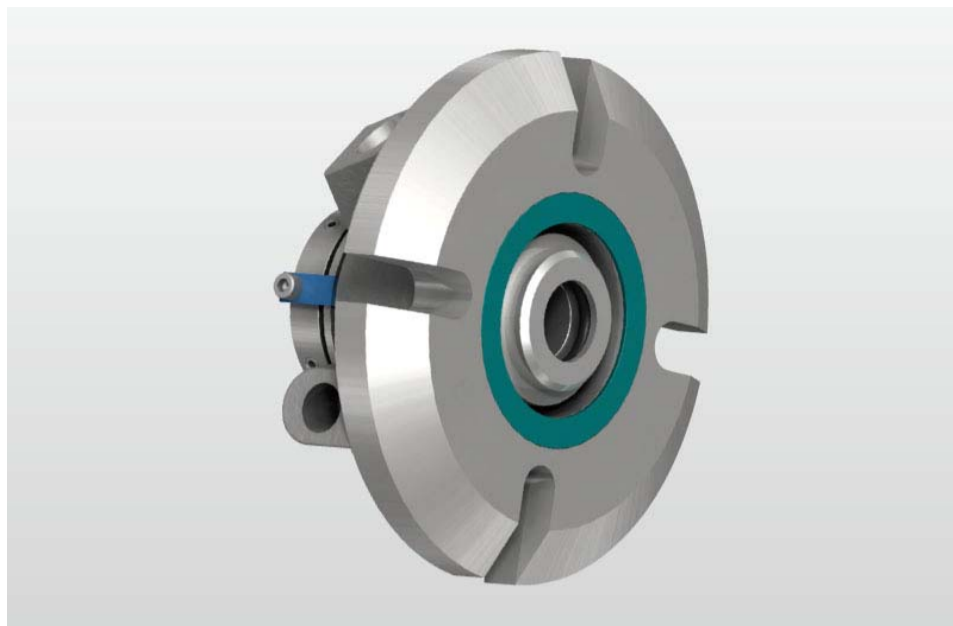


Sellos Mecánicos de Cartucho TSSC-J01 25mm-140mm**Límites de Funcionamiento**

Presión: <math>< 2.1\text{MPa}</math> (diámetro del eje $\leq 75\text{mm}$)

<math>< 1.3\text{MPa}</math> (diámetro del eje $> 75\text{mm}$)

Velocidad: $\leq 25\text{m/s}$

Temperatura: $-30^{\circ}\text{C} \sim +250^{\circ}\text{C}$

Shanghai Trisun Parts Manufacture Co.,Ltd.

Oficina central en Shanghai:

Oficina 05-06, Piso 16th, Edificio Hongjia, Calle Fushan No.388 (Cerca de la Calle Xiangcheng), Pudong, Shanghai, China.

Código Postal: 200122

Tel.: +86-21-58355541,+86-21-58353145,+86-21-58353343

Fax: +86-21-58353141

Correo Electrónico: trisun24@trisunltd.com

Parámetros:

Parámetros: d ₁ (mm)	d ₂	d ₄		d ₂₆	l ₁₂	l ₂₃	l ₂₉	l ₅₆	l ₉₀	l ₉₁	l ₉₂	m	n
		Mín.	Máx.										
25	34.9	36.7	48.0	101.6	50.5	34.4	49.6	13.5	50.8	4.0	0.9	13.3	71.2
28	38.1	\	51.2	104.8	52.4	36.7	52.4	13.5	54.0	3.2	\	13.3	74.5
30	40.0	\	56.5	108.0	52.4	36.7	52.4	13.5	54.0	3.2	\	13.3	79.9
32	41.3	\	58.3	108.0	52.4	36.7	52.4	13.5	54.0	3.2	\	13.3	81.6
33	44.5	\	61.5	111.1	52.4	36.7	52.4	13.5	54.0	3.2	\	13.3	84.8
35	44.5	\	61.5	111.1	52.4	36.7	52.4	13.5	54.0	3.2	\	13.3	84.8
38	49.2	51.0	68.1	123.8	54.8	37.8	54.0	15.1	55.5	4.0	0.8	13.3	91.4
40	52.4	54.2	71.4	127.0	54.8	37.8	54.0	15.1	55.5	4.0	0.8	14.3	95.7
43	55.1	56.9	74.1	133.4	54.8	37.8	45.0	15.1	55.5	4.0	0.8	14.3	98.4
45	55.1	56.9	74.1	133.4	54.8	37.8	54.0	15.1	55.5	4.0	0.8	14.3	98.4
48	58.7	60.5	74.1	133.4	54.8	37.8	54.0	15.1	55.5	4.0	0.8	14.3	98.4
50	61.9	63.7	76.6	139.7	60.3	40.7	58.7	27.0	60.3	4.7	1.6	14.3	101.6
53	65.1	66.9	85.3	148.8	60.3	40.7	58.7	15.1	60.3	4.7	1.6	17.4	113.5
55	66.7	75.0	85.3	148.8	60.3	40.7	58.7	15.1	60.3	4.7	1.6	17.4	113.5
58	68.2	70.0	88.5	165.1	60.3	40.7	58.7	15.1	60.3	4.7	1.6	17.4	116.0
60	71.4	73.2	91.7	165.1	63.1	43.6	62.6	15.9	64.2	3.6	1.6	17.4	119.9
63	77.8	\	98.8	171.5	63.1	43.6	65.1	15.9	66.7	3.2	0.5	17.4	127.0
65	77.8	\	98.8	171.5	63.1	43.6	65.1	15.9	66.7	3.2	\	17.4	127.0
68	84.1	\	103.2	171.5	63.5	41.3	63.5	15.9	65.1	3.2	\	17.4	131.3
70	84.1	\	103.2	171.5	63.5	41.3	63.5	15.9	65.1	3.2	\	17.4	131.3
75	92.1	\	113.5	196.9	63.5	45.4	65.1	17.4	66.7	3.2	1.36	20.6	145.3
80	95.3	97.9	116.8	196.9	65.1	40.5	63.8	\	66.9	4.5	\	20.6	148.4
85	101.6	104.8	123.2	206.4	65.1	40.5	65.1	\	68.3	3.2	\	20.1	154.8
90	107.1	110.3	129.5	212.7	65.1	40.5	65.1	\	68.3	3.2	\	17.4	158.8
95	110.3	113.5	132.1	222.3	65.1	40.5	65.1	\	68.3	3.2	\	17.4	172.0
100	116.7	119.8	139.7	228.6	65.1	40.5	65.1	\	68.3	3.2	\	20.6	171.7
105	119.8	123.0	142.9	228.6	65.1	40.5	65.1	\	68.3	3.2	\	20.6	174.9
110	129.4	132.5	152.4	241.3	65.1	40.5	65.1	\	68.3	3.2	\	20.6	184.4
115	129.4	132.5	152.4	241.3	65.1	40.5	65.1	\	68.3	3.2	\	20.6	184.4
120	135.7	138.9	160.4	263.5	65.1	40.5	65.1	\	68.3	3.2	\	20.6	192.4
125	148.4	151.6	184.4	304.8	75.0	44.4	77.3	\	80.5	3.2	\	20.6	254.0
130	154.8	157.9	190.8	311.2	75.0	44.4	77.3	\	80.5	3.2	\	20.6	260.4
135	161.1	164.3	203.2	322.3	75.0	44.4	77.3	\	80.5	3.2	\	23.8	266.7
140	161.1	164.3	203.2	322.3	75.0	44.4	77.3	\	80.5	3.2	\	23.8	266.7

Shanghai Trisun Parts Manufacture Co.,Ltd.

Oficina central en Shanghai:

Oficina 05-06, Piso 16th, Edificio Hongjia, Calle Fushan No.388 (Cerca de la Calle Xiangcheng), Pudong, Shanghai, China.

Código Postal: 200122

Telf.: +86-21-58355541,+86-21-58353145,+86-21-58353343

Fax: +86-21-58353141

Correo Electrónico: trisun24@trisunltd.com